

Quick Start Guide for iOS Setup

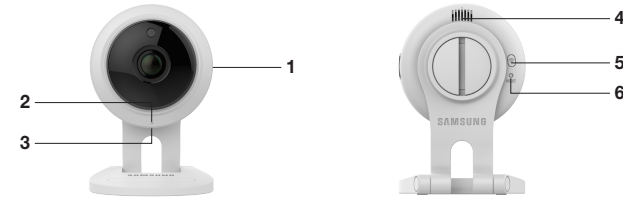
Before you begin your SmartCam Setup, please:

- ✓ Have your SmartCam and power adapter ready.
- ✓ Have your iOS device available to download the SmartCam app.
- ✓ Make sure you are within range of the same Wi-Fi network you'll use for your camera.
- ✓ Record your Wi-Fi network password here: _____

For more information about the user manual, the mobile app manual or the FAQ, please visit www.samsungsmartcam.com. If you have questions or need any help related to the installation of the SmartCam, refer to the help list in the mobile app information menu or contact our technical support team.

Product Views For Setup

Use the following diagrams to familiarize yourself with the camera setup features:



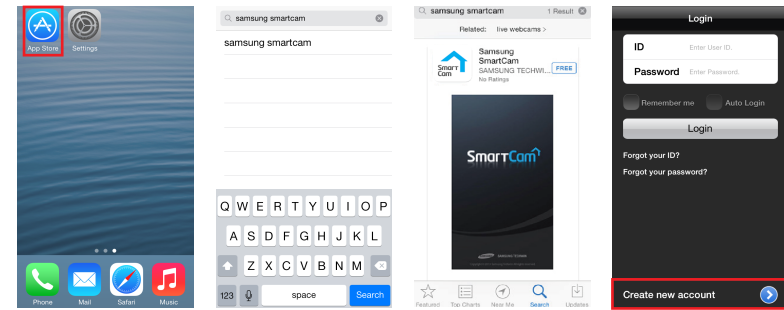
- 1) MicroSD Card Slot (up to 128GB)
- 2) Power/Wi-Fi Status LED, Mic
- 3) Power Input
- 4) Speakers
- 5) Wi-Fi Direct Button
- 6) Reset Button

For a more detailed diagram, please refer to the User's Manual.

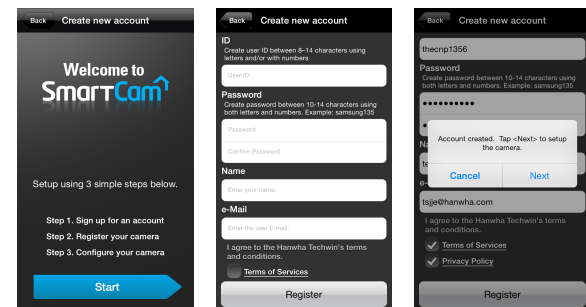
The initial camera registration can only be performed using the mobile app. You can also access all functions at www.samsungsmartcam.com, including camera settings, live monitoring and playing back recorded videos.

Create User Account

Please follow these easy steps to create a user account, before setting up your camera.



1. Go to the App Store from your iPhone or iPad.
2. Search for "Samsung SmartCam" and install the app.
3. Open the app.
4. Tap "Create new account".



5. Tap "Start".
6. Enter user ID, password, name and e-mail. Tap "Register".
7. Tap "Next" to register your camera.

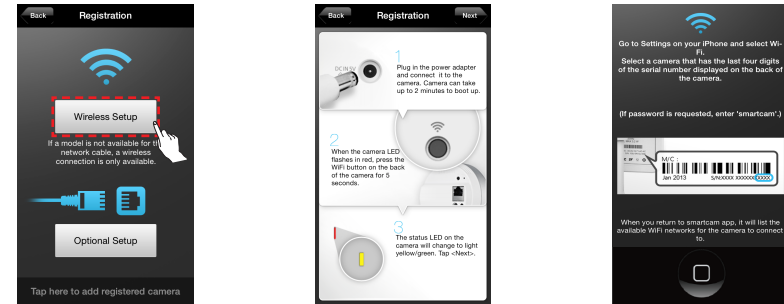
Record Your SmartCam User Account Information Here:

USER ID: _____
A combination of 8-14 alphanumeric letters
Example: johnsmith or johnsmith12

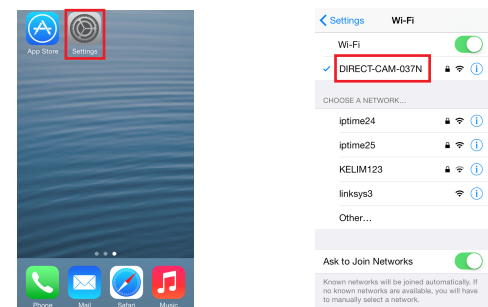
USER PASSWORD: _____
A combination of 10-14 alphanumeric letters
Example: smartcam123

iOS Wireless Camera Setup

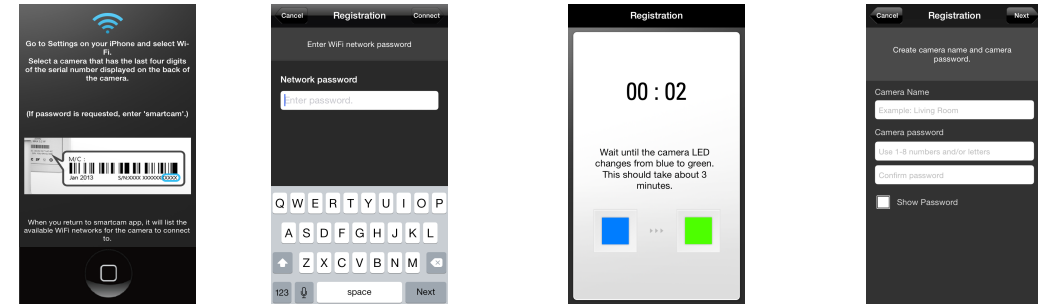
Continue with camera setup by following the app wizard instructions.



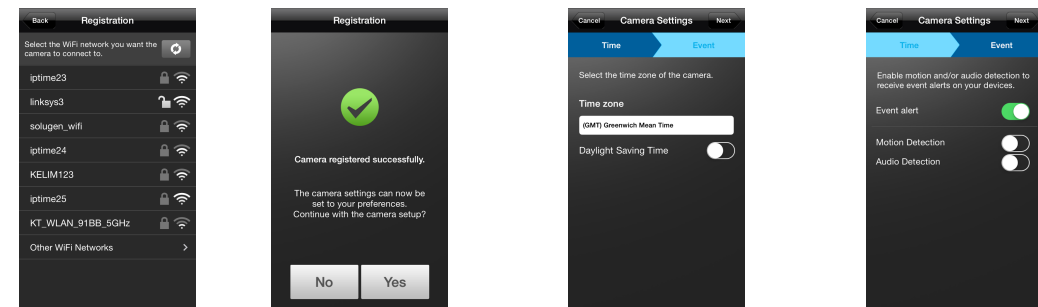
1. Tap "Wireless Setup".
2. Connect the power and follow the on-screen instructions to set up Wi-Fi connection. When done, click "Next".



4. Go to the "Settings" on your iPhone/iPad, and tap "Wi-Fi".
5. Turn on your Wi-Fi, and pick the network ending in the last 4 characters of your camera's serial number. If a password is required, enter "smartcam". Once connected, exit "Settings" and return to the SmartCam app.



7. Enter your home Wi-Fi network password and tap "Connect".
8. When the LED light turns green on the camera, you will automatically be directed to Step 9.
9. Create a name and password for your camera. (Name: 1-20 letters and numbers. Password: 1-8 letters and numbers)



10. To setup your camera, select "Yes".
11. Select your Time Zone and then tap "Next".
12. Enable motion and/or audio detection to receive event alerts on your devices.

CONGRATULATIONS!
You have successfully completed the SmartCam setup!

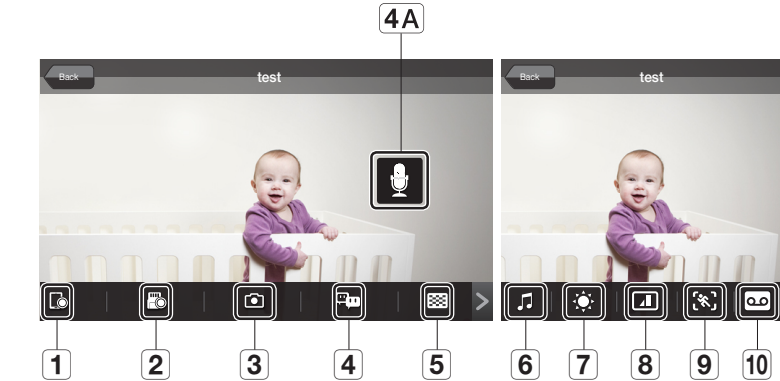
Camera Setup Information:

CAMERA NAME: _____
1-20 alphabetic letters and/or numbers
Example: kitchen or kitchen123 or 123

CAMERA PASSWORD: _____
1-8 alphabetic letters and/or numbers
Example: room or room123 or 123

SmartCam Control Guide

Once setup is complete and live video appears on your iOS device, tap the screen to display the SmartCam tool bar to customize your SmartCam experience. The table below is reference information for the Search Screen Control function.



Number	Description
1. Phone recording	The user can save the video in <Manage saved video clips> in Settings
2. SD Save	Tap to save streaming video onto the SD card
3. Capture	Tap to capture and save a still image during monitoring
4. Two-Way Talk	Tap to begin and end Two-Way Talk between mobile device and camera
4A. Microphone Button	To talk, press and hold the mic button on the screen, release to listen
5. Selecting a resolution	It displays the video resolution that is currently connected. Please tap to change the current resolution.
6. Melody	Tap to view and choose melody selection to play through camera
7. Brightness Control	Tap to adjust screen image brightness
8. Flip Control	Tap to flip screen image vertically or horizontally
9. Motion Zone Select	Tap to detect a motion in a specific area (up to 3 areas). If the motion detection function is activated, any motion can be detected, without even setting the motion zone.
10. Voice Recording	You can output any voice message recorded via the camera speaker (up to 10 messages).

Quick Start Guide for Android Setup

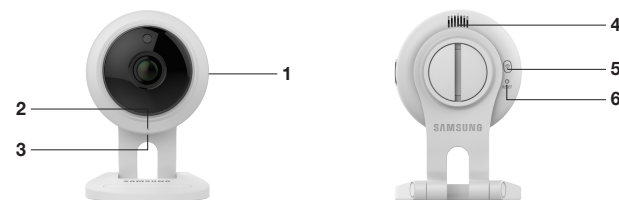
Before you begin your SmartCam Setup, please:

- ✓ Have your SmartCam and power adapter ready.
- ✓ Have your Android device available to download the SmartCam app.
- ✓ Make sure you are within range of the same Wi-Fi network you'll use for your camera.
- ✓ Record your Wi-Fi network password here: _____

For more information about the user manual, the mobile app manual or the FAQ, please visit www.samsungsmartcam.com. If you have questions or need any help related to the installation of the SmartCam, refer to the help list in the mobile app information menu or contact our technical support team.

Product Views For Setup

Use the following diagrams to familiarize yourself with the camera setup features:



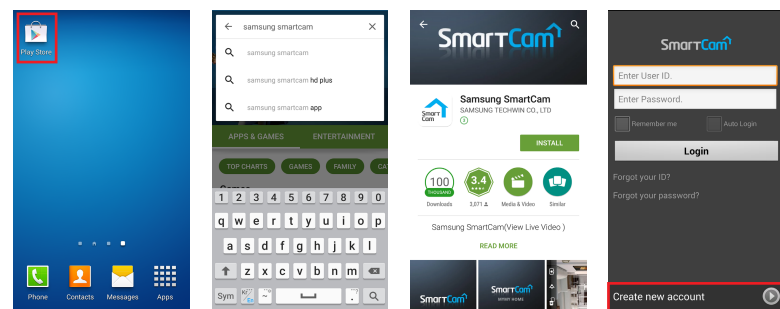
- | | |
|------------------------------------|------------------------|
| 1) MicroSD Card Slot (up to 128GB) | 4) Speakers |
| 2) Power/Wi-Fi Status LED, Mic | 5) Wi-Fi Direct Button |
| 3) Power Input | 6) Reset Button |

For a more detailed diagram, please refer to the User's Manual.

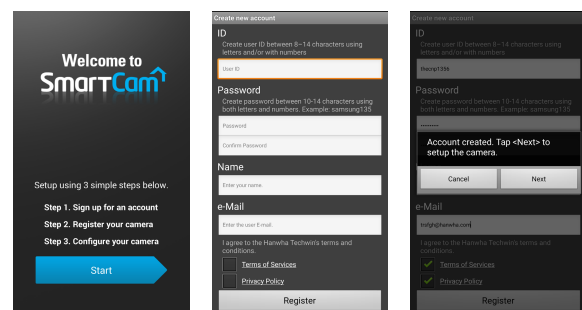
The initial camera registration can only be performed using the mobile app. You can also access all functions at www.samsungsmartcam.com, including camera settings, live monitoring and playing back recorded videos.

Create User Account

Please follow these easy steps to create a user account, before setting up your camera.



1. Go to the Play Store from your Android device.
2. Search for "Samsung SmartCam" and install the app.
3. Open the app.
4. Tap "Create new account".



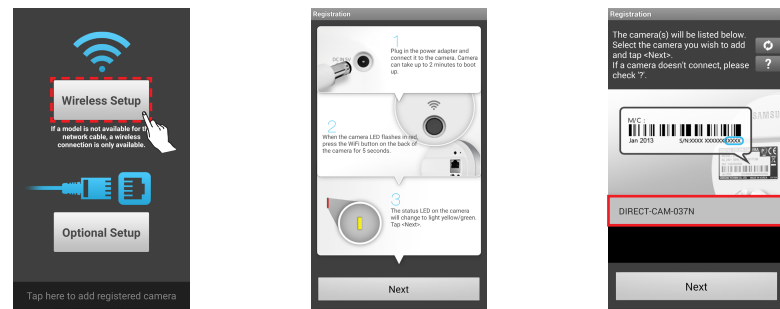
5. Tap "Start".
6. Enter user ID, password, name and e-mail. Tap "Register".
7. Tap "Next" to register your camera.

Record Your SmartCam User Account Information Here:

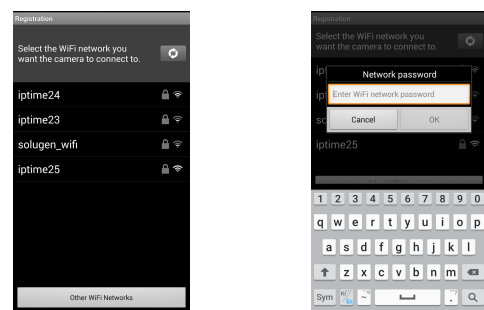
USER ID: _____ A combination of 8-14 alphanumeric letters Example: johnsmith or johnsmith12	USER PASSWORD: _____ A combination of 10-14 alphanumeric letters Example: smartcam123
--	--

Android Wireless Camera Setup

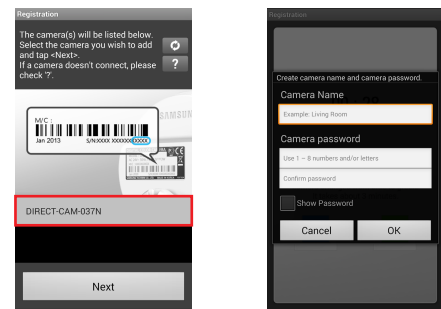
Continue with camera setup by following the app wizard instructions.



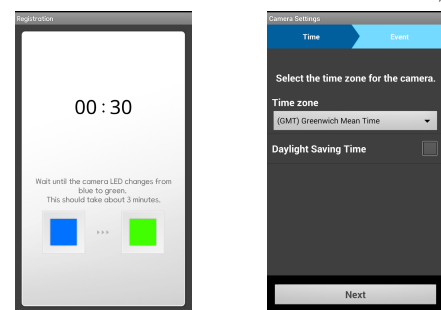
1. Tap "Wireless Setup".
2. Connect the power and follow the on-screen instructions to set up Wi-Fi connection. When done, click "Next".



4. Select your home Wi-Fi network.
5. Enter your home Wi-Fi network password and tap "OK".



3. Select your camera's serial number and tap "Next".
7. Create name and password for your camera. (Name: 1-20 letters and numbers. Password: 1-8 letters and numbers)



9. Select your Time Zone and then tap "Next".
6. When the LED light turns green on the camera, you will automatically be directed to Step 7.

CONGRATULATIONS!

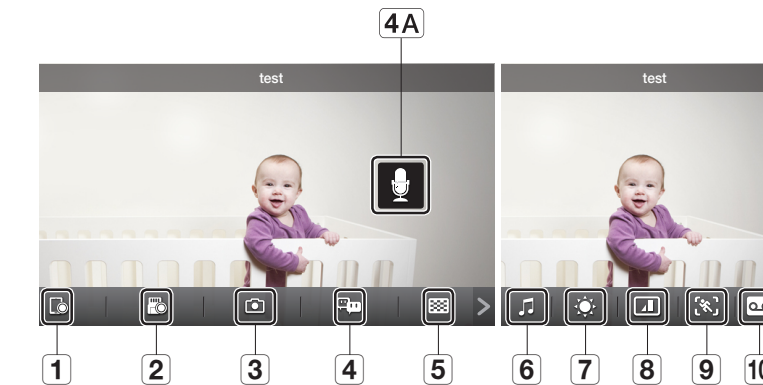
You have successfully completed the SmartCam setup!

Camera Setup Information:

CAMERA NAME: _____ 1-20 alphabetic letters and/or numbers Example: kitchen or kitchen123 or 123	CAMERA PASSWORD: _____ 1-8 alphabetic letters and/or numbers Example: room or room123 or 123
--	---

SmartCam Control Guide

Once setup is complete and live video appears on your Android device, tap the screen to display the SmartCam tool bar to customize your SmartCam experience. The table below is reference information for the Search Screen Control function.



Number	Description
1. Phone recording	The user can save the video in <Manage saved video clips> in Settings
2. SD Save	Tap to save streaming video onto the SD card
3. Capture	Tap to capture and save a still image during monitoring
4. Two-Way Talk	Tap to begin and end Two-Way Talk between mobile device and camera
4A. Microphone Button	To talk, press and hold the mic button on the screen, release to listen
5. Selecting a resolution	It displays the video resolution that is currently connected. Please tap to change the current resolution.
6. Melody	Tap to view and choose melody selection to play through camera
7. Brightness Control	Tap to adjust screen image brightness
8. Flip Control	Tap to flip screen image vertically or horizontally
9. Motion Zone Select	Tap to detect a motion in a specific area (up to 3 areas). If the motion detection function is activated, any motion can be detected, without even setting the motion zone.
10. Voice Recording	You can output any voice message recorded via the camera speaker (up to 10 messages).