

Quick Start Guide

KIT MODEL
SNK-B73040BW

NVR MODEL
SNR-73200W

ALL-IN-ONE SECURITY SYSTEM **SAMSUNG** WISENET

Thank you for purchasing the NVR Security System.

Follow the simple steps in this guide to set up and start using your new security system.



If you have any questions or need help installing your new product, please contact our free technical support.

US:
Telephone: +1-877-349-3149 (Toll free)
6am - 6pm PST (7 days a week)
Web: www.samsungsv.com

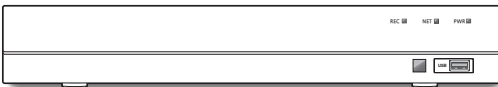
Europe:
Telephone: 00800-801-08022 (Toll free)
8am - 4pm CET, Monday - Friday (5 days a week)
Web: www.hanwha-security.eu

Australia:
Telephone: 1800-665-397 (Australia) or
09-363-7877 (New Zealand)
9:00AM - 5:00PM Australian Eastern
Web: www.ddlaustralia.desk.com

CAUTION!

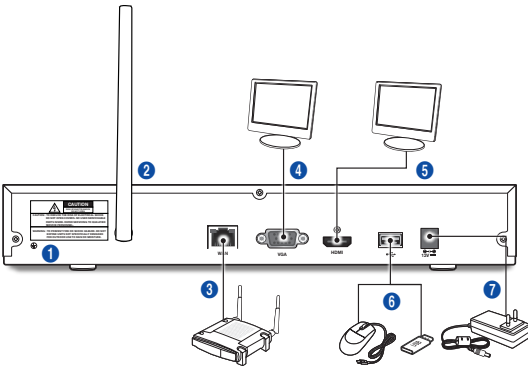
- The transmission range of the wireless signal may weaken if heavy obstructions, such as concrete, brick, or metal walls are between the NVR and cameras.
- If there are multiple Wi-Fi routers and devices in your environment, it may reduce the wireless bandwidth available. Weak network bandwidth may reduce the video quality or video loss.

□ Front



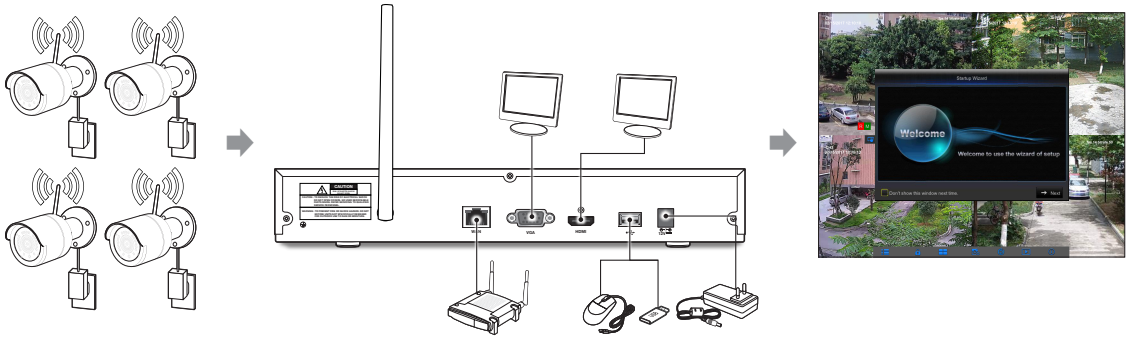
□ Back

- The appearance of power adaptor differs depending on sales region.



Part Name	Function
1 Ground connection	A terminal to connect a separate ground cable. <ul style="list-style-type: none">▪ Make sure to add a ground cable in order to use the equipment safely.
2 Antenna	Receive signal from wireless camera.
3 WAN: (RJ45) Network port	Connect with WAN, Ethernet cable.
4 VGA port	Connect with VGA display devices, such as PC monitor.
5 HDMI	Connect with HDMI display devices, such as PC monitor.
6 USB port	Connect with USB.
7 Power port	Connect with the power supply DC12V 2A, included with the device

Getting Started



- (1) Install the cameras on the walls and connect the power adapters to each camera.
- (2) Plug in the NVR power adapter and connect the NVR to your Wi-Fi router.
- (3) When the NVR is powered on, it will automatically start the pairing process with the cameras. Once the process is complete, the NVR will display live video feeds from your cameras and then start recording.
- (4) You will briefly see a live video on display before you start the Startup Wizard.
- (5) To configure advanced settings for device, please follow the Startup Wizard instructions to complete installation as shown below.

Startup Wizard

After NVR startup is completed, the startup wizard will be displayed.
Wizard setting menu includes:

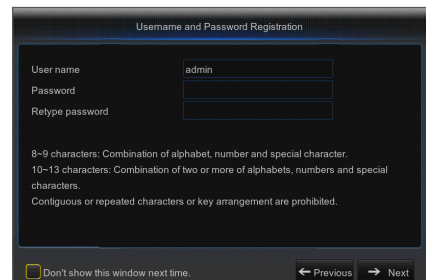
- Homepage
- Admin password setting
- Hard drive management
- Video recording schedule
- Basic system configuration
- Network setup
- E-mail setting
- DDNS setting



You can click on "Don't show this window next time" if you do not want the setting wizard to start automatically next time.

1. Set Admin Password

Please create a username and password for your NVR. Password MUST be 8~13 characters long. When password is 8~9 characters long, it should be with at least a combination of letters, digits and special symbols. If it is 10~13 characters long, it should be with at least a combination of two types of characters. 4 or more contiguous or repeated characters or key arrangement are prohibited, for example 1111, 1234, abcd, qwerty.



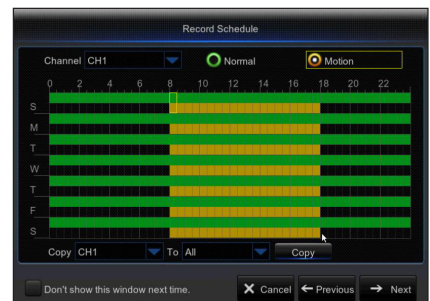
2. Hard Drive Management

New hard drive(s) connected must be formatted before use. Upon connection, it will indicate to format new hard drive. Click on "Select" to select the unformatted hard drive. Click on "Format HDD" to pop up the user login window and enter the password to log in. A notice window will indicate "Entire Data Will Be Erased. Do You Want To Continue?". Click "OK" to format the disk. When the progress bar is complete, the formatting process is completed.

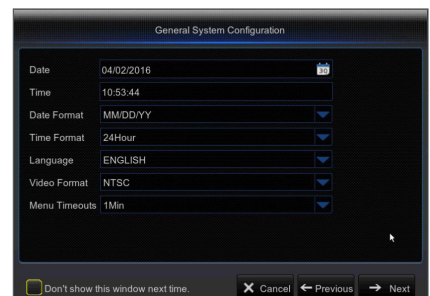


3. Video Recording Schedule. Select the channel and the date to be set. One week's schedule can be set. The record "schedule" of the current channel can be copied to any other channel or all channels.

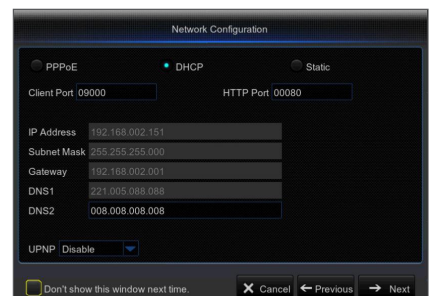
- If there is no color in the record menu and record search, there is no recording saved.
- "Green" stands for normal record and "yellow" stands for motion record.



4. Basic System Configuration- You can set date, time, date format, time format, language, video format and menu timeout.

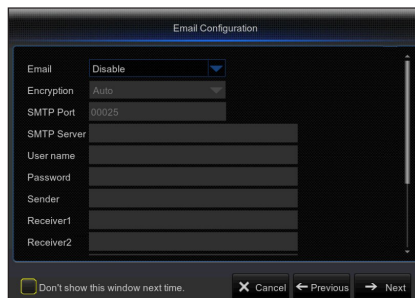


5. Network Setup (DHCP). In DHCP mode, the router will automatically allocate IP address to the NVR. If the NVR fails to obtain an IP address, refer to the NVR Router Guide. If the problem still cannot be resolved, contact technical support.



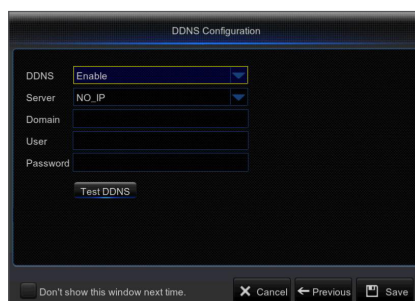
6. Email Setting. Receive or Send NVR alarm email and set parameters like email address, Encryption, email enable, and interval.

- **Encryption:** Disable, SSL, TLS and Auto optional. Auto means it can detect the encryption type automatically. It is recommended to set the encryption type as Auto.
- **SMTP Port:** Mail sending port used by SMTP (Simple Mail Transfer Protocol). Server is generally Port 25 or Port 465 when SSL is used by Gmail.
- **SMTP Server:** Enter the address of the server for the mailbox in use.
- **User Name:** Enter a server to connect to. For example, email "aaa@gmail.com" should correspond to server "smtp.gmail.com"
- **Password:** Enter the password of the SMTP server user.
- **Sender Address:** Sender's email address, which must correspond to the server used. For example, email "aaa@gmail.com" should correspond to server "smtp.gmail.com".
- **Receiver 1/2/3:** Recipient's mail address, used to receive alarm image and message from NVR side. If system alarms continually and sends email images frequently, save the images to another location or remove them, so as to avoid excessive space occupation and thereby affect your normal use of mailbox.
- **Time Interval:** A mail will be sent every three minutes by default. If the time interval for mail notification is set too short, email server may deem mails as junk mails, so they cannot be transferred normally.
- Click on "Test Email". If connection succeeds "Test E-mail" will be sent out.



7. DDNS SETTING. User may set DDNS under network type of PPPoE/Static/DHCP after applying dynamic domain service. User may remotely access NVR through domain by using browser in the form of http://applied domain: mapped HTTP port number when using DDNS domain name to access NVR.

- **Server address:** Select dynamic domain name server provider. Available domain name servers (HANWHA-SECURITY, DDNS_3322, DYNDNS, NO_IP, CHANGEIP, DNSEXIT)
- **Domain:** Dynamic domain name of the host obtained from dynamic domain name service provider upon registration, for example, NVR2016.no-ip.org.
- **User Name:** The user name registered upon application for dynamic domain name.
- **Password:** The password set upon registration.
- Click on "Test DDNS". If connection is made, it will indicate "DDNS Test is Successful!". Perform remote access to the NVR by using dynamic domain name, for example, http://NVR2016.no-ip.org: HTTP port number (e.g. 19010)

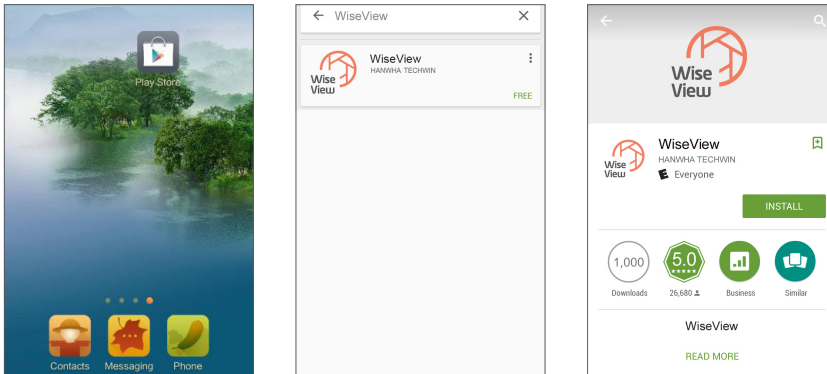


8. Click on "Save" to finish setting of startup wizard.

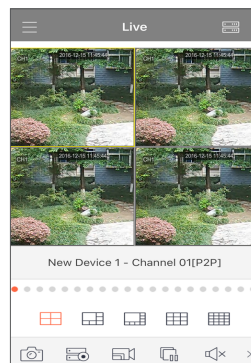
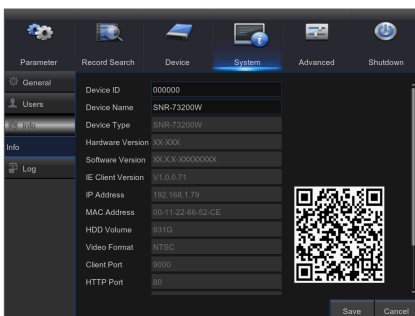
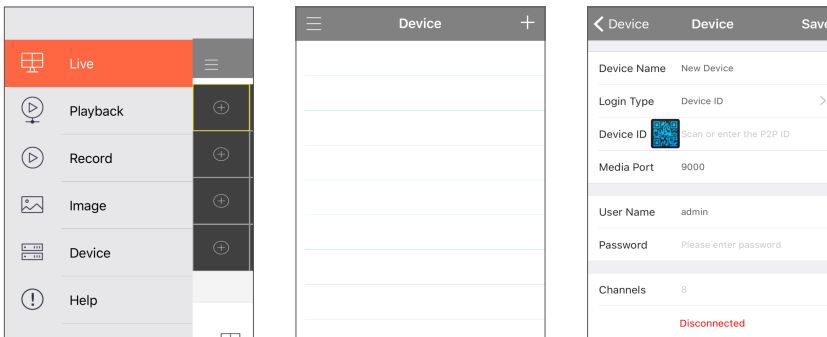
Mobile App

Android Phones/Tablets

1. Open Play Store to search for WiseView and click "INSTALL".

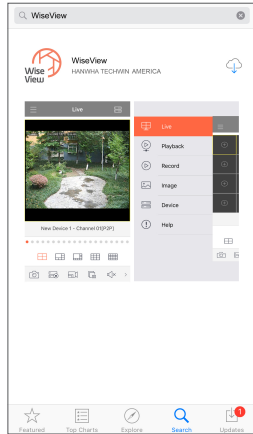
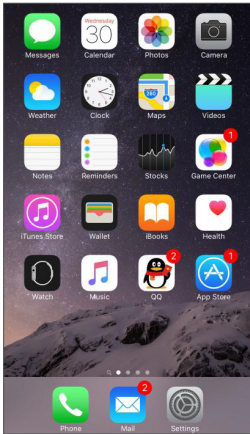


2. After installation, open WiseView and select "Device". Then click [+] to add new device. Scan QR code under Information page. Then input client port, user name and password, and then click Save to log into the NVR.

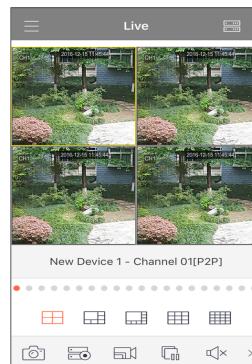
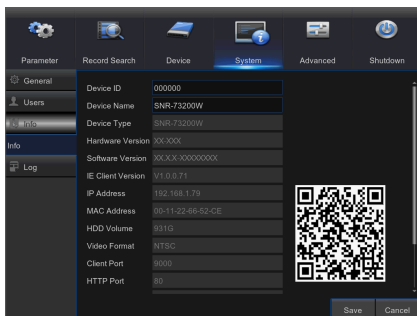
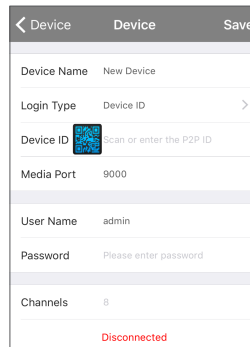
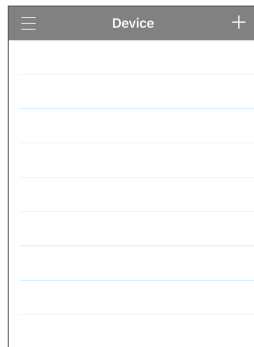
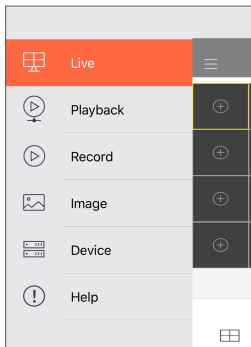


□ iPhone/iPad

1. Open App Store to search for WiseView, and click icon [] to install.



2. Open WiseView, and go to Device. Click [] to add new device. Scan QR code under Information page. Then input client port, user name and password, and then click Save to log into the NVR.



Registering with DDNS

To register your product with the Wisenet DDNS

1. Visit the Wisenet DDNS web site (<http://ddns.hanwha-security.com>) and sign in with a registered account.

2. From the top menu bar, select <MY DDNS>.



3. Click the [Register Product] tab.

4. Select DDNS button.

5. Enter the product ID.

6. Select a <Type> and specify the <Model>.

7. Specify the product location with a description if necessary.

8. Click [Product Registration].
The product will be added to the product list that you can check.

No.	Product ID	Model	Connection Status	Product Management	View	Video Tagging
1	WIS1021		ON	ON/Off	View >	
2	WIS1021		OFF	ON/Off	View >	

□ Main Interface

In real-time preview mode: right click on any area to access the desired menu. Right click on it to open a context menu. Menu items may vary depending on the condition, such as sign-in, sign-out, split screen mode and various operation conditions. Left click on any channel to access shortcut menu. Image capture, recording and image zoom-in are in this section.



The video recording marks are shown below

R means common Recording.

M means Motion detection recording.

M means Motion detection without recording.

Component Name	Function
① Channel Name	Display channel name
② Date & Time	Display current date and time
③ The signal icon	The level of the signal, strong or weak.
④ Video Loss	Wireless Camera is off-line.
⑤ Image Capture	Make a snapshot of current video
⑥ Manual Recording	Enable or disable manual recording
⑦ Quick Playback	Playback of the last five minutes of the video
⑧ Digital Zoom-In	Hold and drag mouse cursor to select a frame of current video to zoom in.
⑨ Channel Color Setting	Set hue, brightness, contrast and saturation of current channel.
⑩ Pair	Do the pairing of camera and NVR.
⑪ Main Menu	Access the main menu
⑫ Lock	Sign out or access sign-in page.
⑬ 4-Channel Layout	Display four channels of video.

Component Name	Function
14 Preview Policy	Realtime: There is no delay of video, but it is not that smooth.
	Smooth: There may be some delay of video, but it is smooth.
	Balanced: Take both realtime and smooth into consideration at the same time.
15 Start SEQ	Press this button to switch the screen mode in sequence.
16 Playback	Replay video recorded
17 Information	System Information.

Network Settings

- **DNS:** DNS is usually provided by local ISP. Enter the IP address of your domain name server.
- **UPnP (Plug and Play):** function of automatic upload from port. It is important that UPnP function be available on the router and should be enabled before use. When UPnP is enabled, port does not need to be mapped on router.
- **Tips:** When settings are confirmed and saved, they will be applied after the "Exit" button is clicked.

1. When selecting DHCP, router will allocate IP address to the NVR automatically, and the IP address allocated to NVR varies upon each start of the NVR or DHCP server, so the corresponding IP address and port number shall be confirmed and mapped prior to remote access to the NVR each time. The operation procedure is as shown below:

- 1 Select DHCP and then click on Save.
Enter client port and HTTP port (they must be different from each other).

- 2 Set the IP address obtained by NVR on router and the port set for mapping, as detailed in router setting.

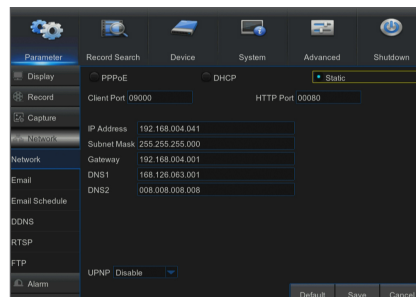
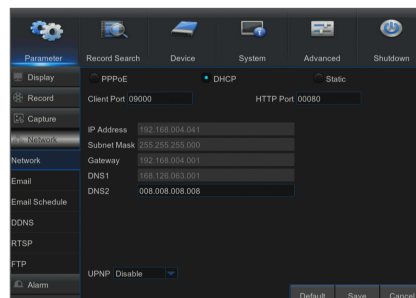
Use the IP address to perform remote access to NVR:

http://IP in public network: HTTP port (e.g. 80)

http://IP in intranet: HTTP port (e.g. 80) (available only in one LAN)

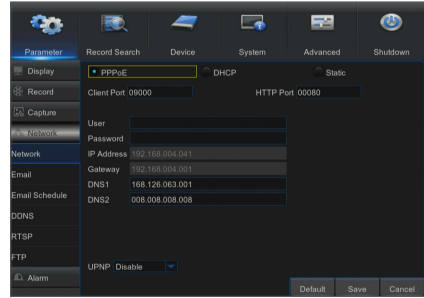
2. When choosing Static, you have to set IP address, subnet mask, gateway and port number. The operation procedure is as shown below:

- 1 Select Static as network type.
- 2 Set port (client port), which shall be mapped on router.
- 3 Enter HTTP port (which must be different from client port), which shall be mapped on router.
- 4 Enter the specified IP address to this bar, which will become the unique NVR address code in regional network, for example, 192.168.2.128 as shown below.
- 5 Subnet mask: view the router to set a same mask as that in it, or consult your network operator.
- 6 DNS: Enter DNS (domain name server) address. View the router to set the same gateway as that, or consult your network operator.
- 7 Click on "Save" to save changes.



3. Select PPPoE for direct dial-up in the following procedure:

- 1 Enter Client port.
- 2 Enter HTTP port (which must be different from Client port).
- 3 Enter user name and password for PPPoE, which are provided by network operator.
- 4 Enter DNS (domain name server) address.
- 5 Click on "Save" to exit and restart it, and then the NVR will obtain an IP address.
- 6 Perform remote access to the NVR by using the IP address followed by port number (IP: HTTP port number).

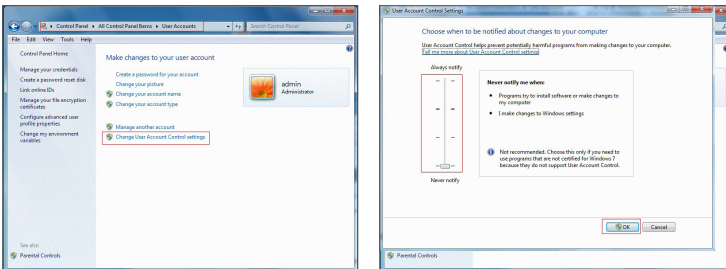


Web Application Manager

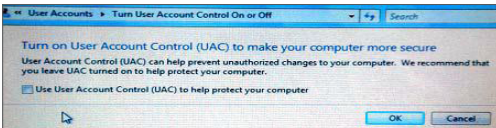
Download and Installation of Plugin.

If you are using Windows 7, you may need to setup the user authority for remote control, or you may be unable to backup or record. Vista System: Start → Setup → Control Panel. Set user authority in control panel as shown below. Remove the check mark "✓" in front of "Use UAC to help protect your computer" and click "OK".

WIN7



Vista

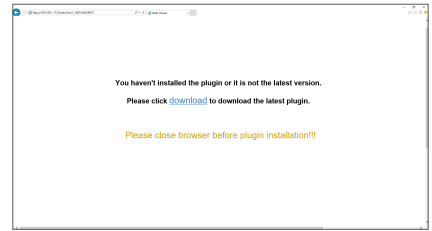


- If the plugin is not downloaded successfully, please check if your browser's safety level or firewall setting is set too high. Please open IE browser → [Menu Bar] Tools → Internet options → Security → Internet → Custom level → Enable the options.



Download and installation of plugin for IE

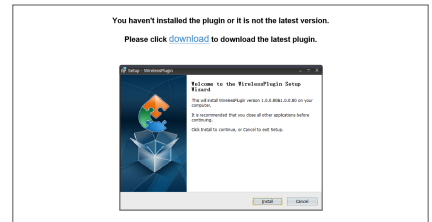
Enter IP address plus HTTP port of the NVR in the address bar of IE, for example, <http://192.168.2.173:80>.



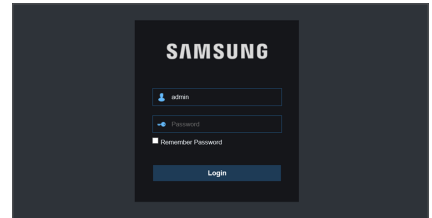
Click "Download" and then "Run" to begin downloading the file.



Click on "Install" in the "Setup-WirelessPlugin" dialog box.

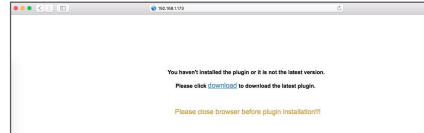


Close your IE browser and restart it. Enter IP address plus HTTP port of the NVR in address bar to access the login page.

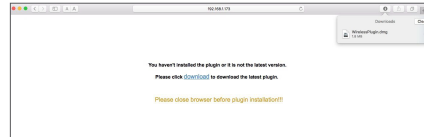


Download and installation of plugin for Mac SAFARI

Enter the IP address and HTTP port for the NVR in the address bar of Mac SAFARI browser. For example, <http://192.168.2.173:80>, and click on "Download" to download the plugin.



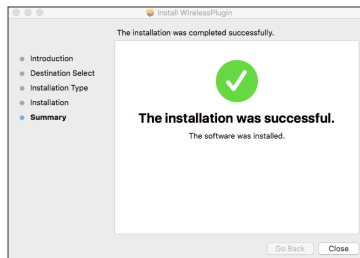
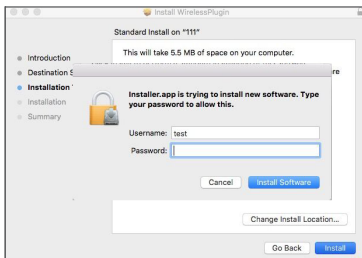
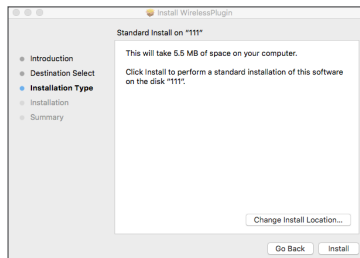
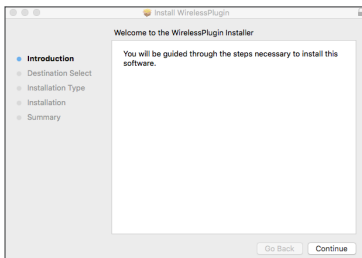
Locate the downloaded plugin "WirelessPlugin.dmg" and double click on it.



Install the plugin by double clicking on "WirelessPlugin.pkg".

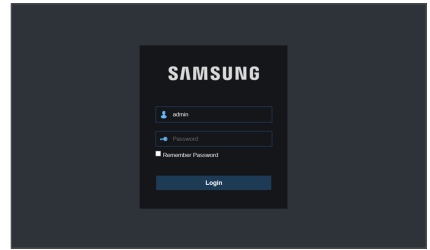


Click on "Continue" > "Install". Enter user name and password for login to your Mac. Click on "Install" > "Close" to finish installation.



Close your Mac Safari browser and restart it. Enter the IP address and HTTP port for the NVR in the address bar to access login page.

- ✎ The above instruction is to install the initial plugin. You can use the same plugin for IE and Firefox. If plugin for windows OS was installed on IE, Firefox once, you can use IE which needs to be run as administrator, Firefox to log in to NVR.

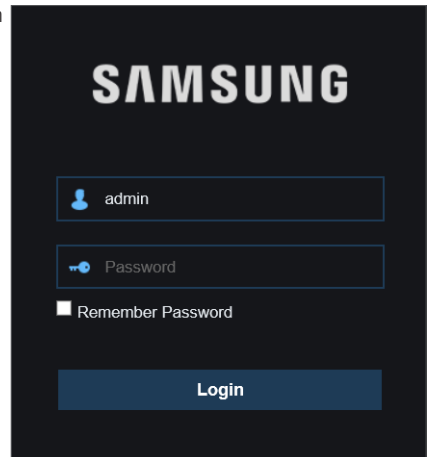


When you download and install plugin on Firefox, please close Firefox when it is prompted to. After installation is finished, you can restart Firefox to log in to the NVR.

When you do a firmware upgrade, please close the browsers in order to have the new plugin replace the old one. Depending on your situation, the plugin may not be work on your browser. In this case, please install the plugin unavailable on the CD provided. (WirelessPlugin_Windows_YYYY_MM_DD.exe for Windows system, and WirelessPlugin_Mac_YYYY_MM_DD.dmg for Mac).

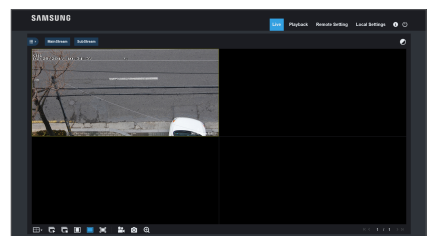
☐ Web Application Manager Login

After plugin installation, please enter user name and password, select Main Stream or Sub Stream (In general, select main stream for intranet and sub stream for extranet), and select language in the interface. There is an option for opening all channel preview, select it to open all live pictures. Click Login to log in remotely view the NVR.



☐ Live Interface

Log in and go to live view.

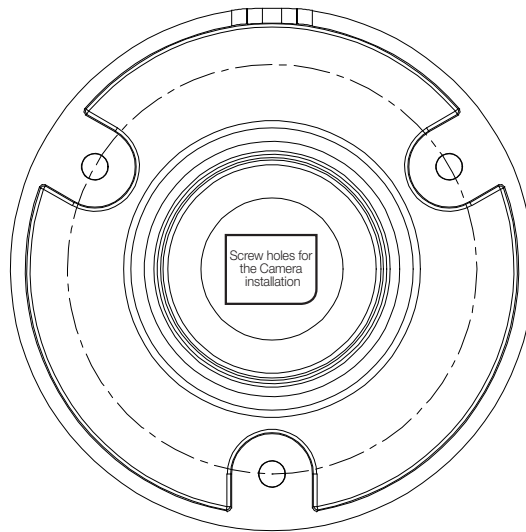


Camera Installation Template - SNC-79440BW

To make camera installation easier, you can tear off this page and adhere it to the place you would like to install your cameras.

TEMPLATE

This template is used to install the camera on the wall



CAMERA FRONT



