

# Quick Start Guide

KIT MODEL  
SDH-C5100 SDH-B3040 SDH-B3020

DVR MODEL  
SDR-C5300 SDR-B3300

## SAMSUNG ALL-IN-ONE SECURITY SYSTEM

SAMSUNG

English

Thank you for purchasing a Samsung DVR Security System.  
Follow the simple steps in this guide to set up and start using your new system.



If you have any questions or need help installing your new product please contact our free technical support.

Telephone: 1-877-349-3149

9am - 9pm EST, Monday - Friday

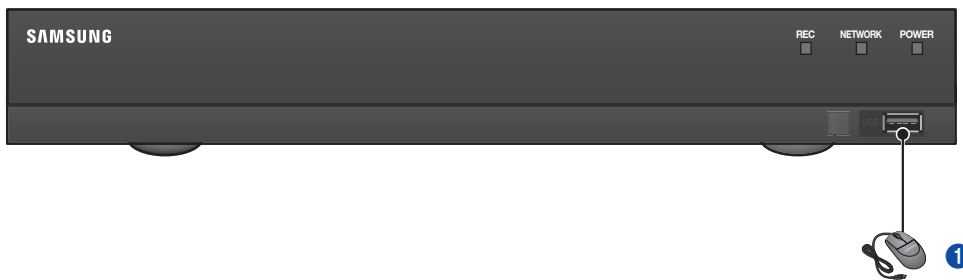
Internet: <http://www.samsungsv.com>

## INSTALLING YOUR SYSTEM

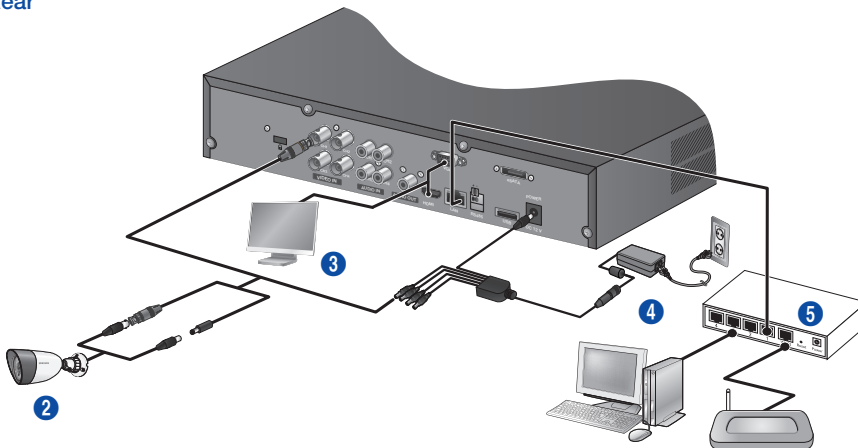
Images may differ depending on the model.

### 4CH DVR

#### Front



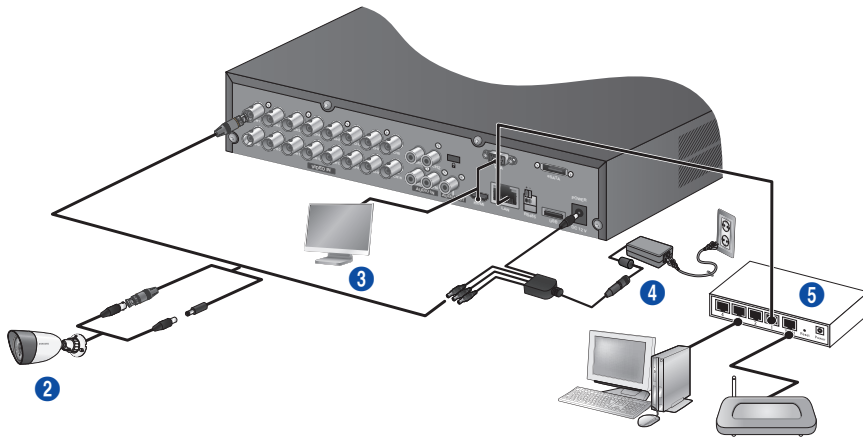
#### Rear



1	Connect a mouse	4	Connect the DC adaptors
2	Connect a camera	5	Connect to a network router
3	Connect a monitor		

## □ 16CH DVR

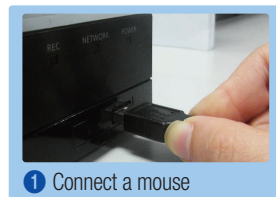
Rear

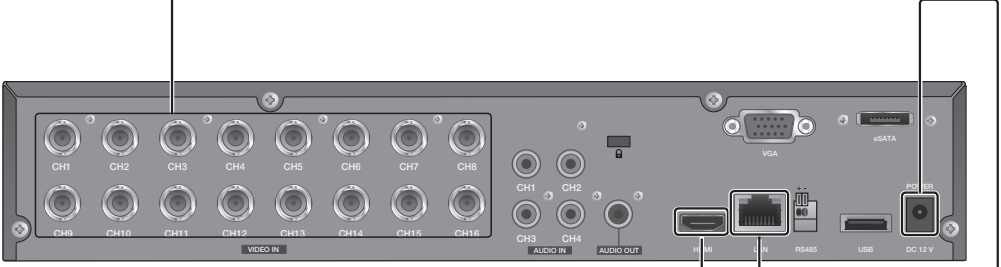
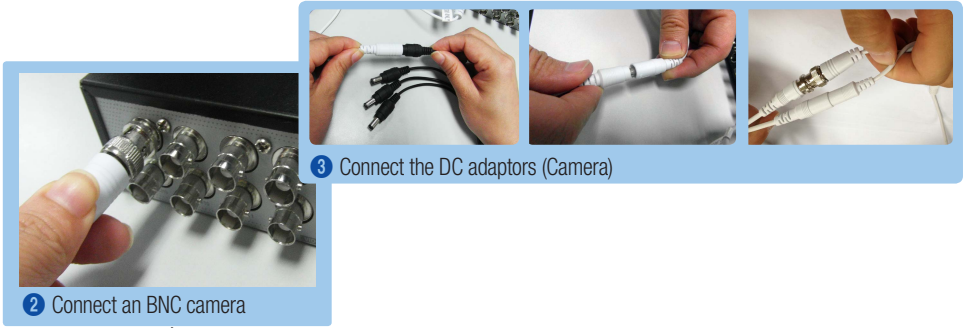


1	Connect a mouse	4	Connect the DC adaptors
2	Connect a camera	5	Connect to a network router
3	Connect a monitor		

## □ Connecting the DVR to Live monitoring

Front

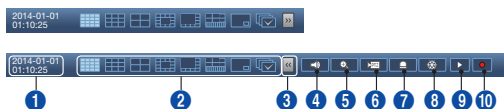




## VIEW THE LAUNCHER MENU

The Launcher menu appears on the bottom of the live screen.

1. In Live mode, right-click to display the context menu and select <Show Launcher>.
2. Move the cursor to the bottom and click a desired item in the Launcher menu.



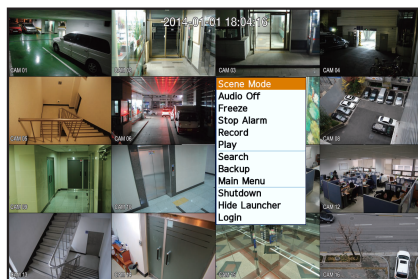
- If no input is entered for 10 seconds, the menu will disappear.
- The Launcher menu can be accessed only by using the mouse.
- Screen mode may vary depending on the DVR supported channel.

1	Date/Time	5	Zoom	9	Play
2	Screen Mode	6	PTZ	10	Record
3	Menu Expansion Button	7	Alarm		
4	Audio	8	Freeze		

## SYSTEM SETTING

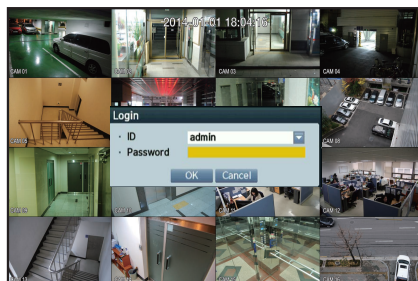
### Time Setting

1. Right click on the mouse and select main menu.

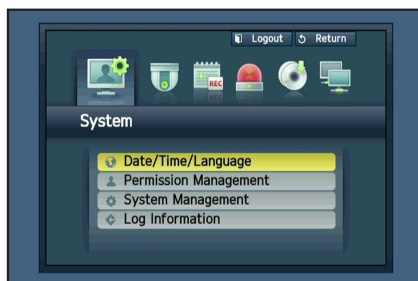


2. In the login window, enter the password and click <OK>.

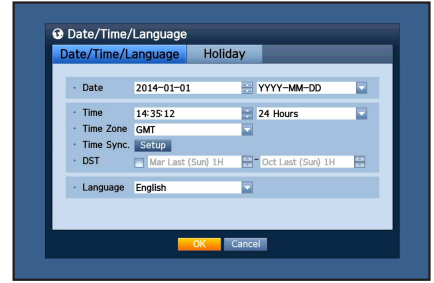
- The initial administrator ID is "admin" and the password should be set when logging in for the first time. Set password for your wireless network if you use the product with a wireless router. Being not protected with password or using the default wireless router password may expose your video data to potential threat. Please change your password every three months to safely protect personal information and to prevent the damage of the information theft. Please, take note that it's a user's responsibility for the security and any other problems caused by mismanaging a password.



3. Click on Date/Time/Language. Set time and date.



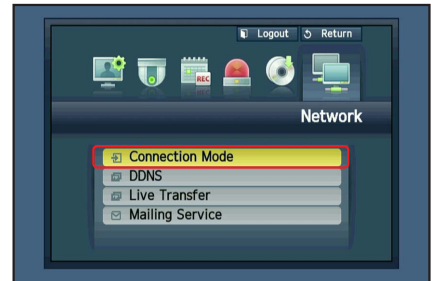
- After filling in the information, Click <OK>.



## Network Setting

### Connection Mode

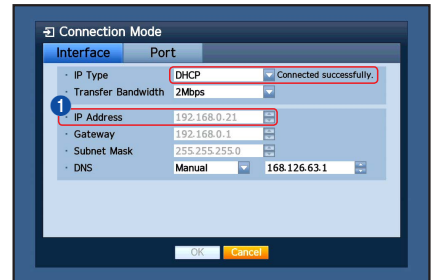
- Click on Network and select <Connection Mode>. If there occur a problem with Connection Mode, check the connection as "Installing your system" on page 1. If you still have a problem, contact the nearest service center for more information.



- Under <Interface> Tab. Check <IP Type> is set to <DHCP> as default. If it connected successfully, you can see the success comment

- If you know Static IP information from your router, please select <Static IP> and enter IP address, Gateway, and Subnet Mask etc.

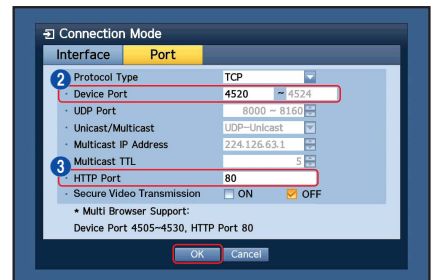
Please refer to the Router Guide in provided CD when you use a static IP.



- Under <Port> Tab. Write down <Device Port> and <HTTP Port>.

- Device Port
- HTTP Port

- When completing the setting, click <OK>.

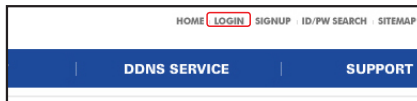


## ❑ SETTING UP SAMSUNG iPOLiS DDNS

Since you will be accessing the DVR remotely, let's setup your Samsung iPolis account first using the PC.

### Go to Your PC

1. Open your browser and go to <http://www.samsungipolis.com> and click <LOGIN>.

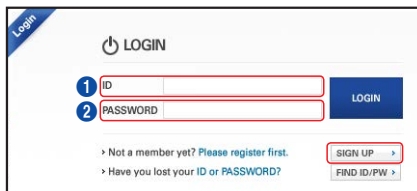


2. You first need to create an account. Click <SIGN UP>.
3. Follow the account registration instructions on the website.
4. After completing the account registration, login to your account.

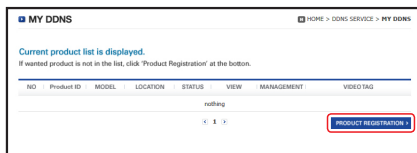
1 Write down your User ID and Password below.

1 ID

2 Password



5. Add your DVR to your account. Click <PRODUCT REGISTRATION>.

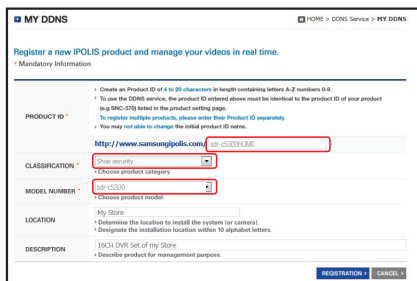


6. Create a name (Product ID) for your DVR. Use 4 to 20 alphanumeric characters without spaces. Select classification, model number of the DVR and click <REGISTRATION>.

1 Model Number

16CH DVR : SDR-C5300 (SDH-C5100)

4CH DVR : SDR-B3300 (SDH-B3040,SDH-B3020)



7. After registration, you should see your product in the list.

1 Write down the product ID below.

3 Product ID

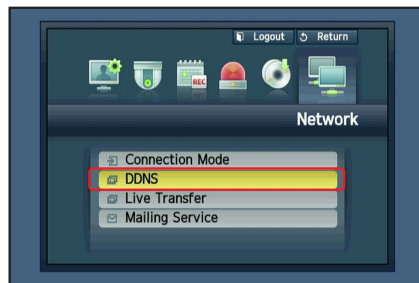


8. Click <LOGOUT> to close the Web Page.

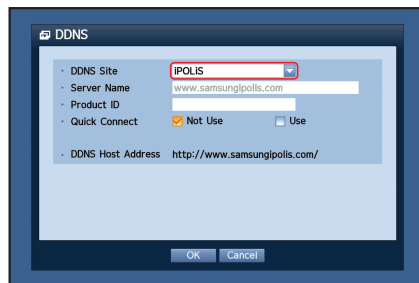


## Go back to DVR

1. From network tab, click on <DDNS>.

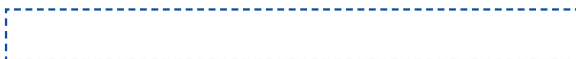


2. Under DDNS Site, select <iPOLiS>.

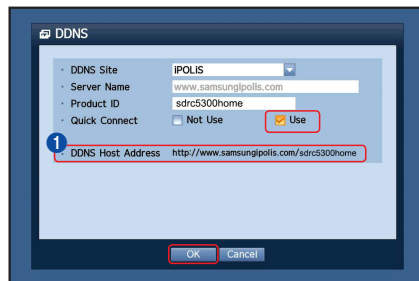


3. Under Product ID, enter the product ID you created on the Samsung iPOLiS website.  
Under Quick Connect, select <Use> and click <OK>.

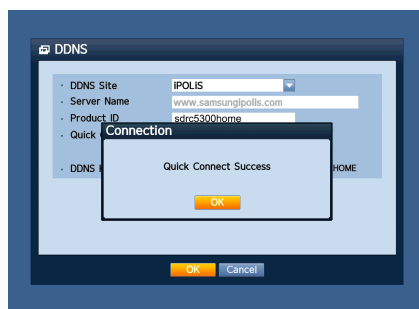
**!** Write down the DDNS Host address:



**1** DDNS Host Address



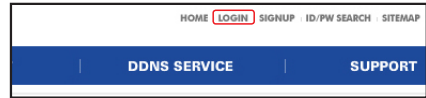
If the connection was not successful, your router may not be supporting UPNP.  
For more information on enabling UPNP on your router, please see User manual.



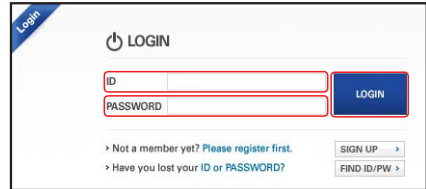
# REMOTE MONITORING

From a Windows computer

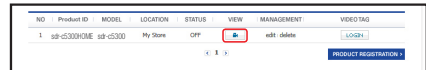
1. Open Windows Internet Explorer and go to <http://www.samsungpolis.com> and click <LOGIN>.



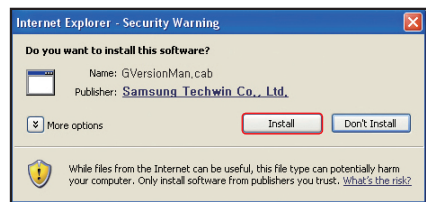
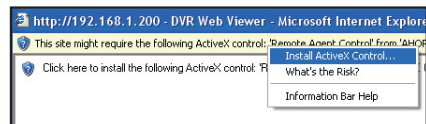
2. Login with the user ID and password you wrote down earlier.



3. Click <  >.

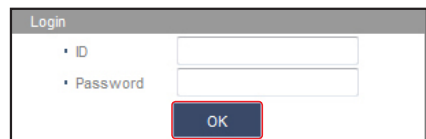


4. You will be asked to install the active X plug-in.

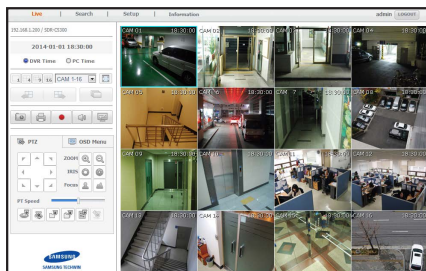


5. Enter the user ID and password for the DVR.

- ! If the screen to the bottom right does not appear, check if the DVR set is connected properly with a valid IP address.



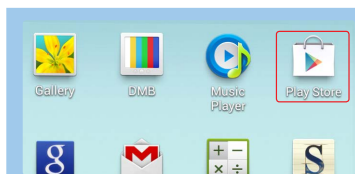
6. Now, you can install the cameras and place the cameras where they are needed.



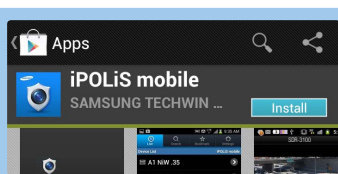


## USING A SMARTPHONE

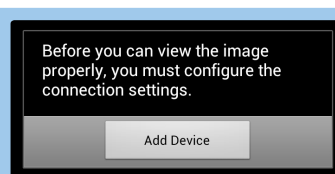
### For Android Phone



- 1 Visit Play Store to Download the Samsung iPOLiS mobile app.



- 2 Search for Samsung iPOLiS.



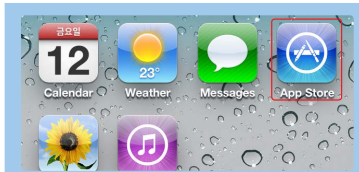
- 3 Launch the iPOLiS mobile app add the DVR. Tap on the menu icon and tap <Add Device>.

Field	Value
Name	SDR-C5300
Model	DVR
Host	www.samsungipolis.com/sdr-c5300
HTTP Port	80
RTSP Port	4524
ID	admin

- 4 Register the DVR to the iPOLiS mobile.

- 1 **Name** : Create a name for the DVR you are adding  
**Model** : Select the DVR  
**Host** : If you are using Samsung iPOLiS DDNS, enter the DDNS Host Address you wrote down earlier. (Page 6, 7)  
It should be [www.samsungipolis.com/Product ID](http://www.samsungipolis.com/Product ID)  
**HTTP Port** : Enter the HTTP Port you wrote down earlier.  
**RTSP Port** : Enter the last port number of Device Port you wrote down earlier.  
**ID** : Default ID is <admin>. If you change before, please enter changed ID.  
**Password** : If you changed before, please enter changed Password.  
**Camera** : Select the cameras you want to view.
- 1 The initial administrator ID is "admin" and the password should be set when logging in for the first time.  
Set password for your wireless network if you use the product with a wireless router. Being not protected with password or using the default wireless router password may expose your video data to potential threat.  
Please change your password every three months to safely protect personal information and to prevent the damage of the information theft.  
Please, take note that it's a user's responsibility for the security and any other problems caused by mismanaging a password.

## ☐ For iPhone



- 1 Visit App Store to Download the Samsung iPOLiS mobile app.



- 2 Search for Samsung iPOLiS.



- 3 Launch the iPOLiS mobile app add the DVR.  
At the Add Device pop-up, tap <OK>.



- 4 Register the DVR to the iPOLiS mobile.

- ☑ For more information of each item, refer to "For Android Phone".

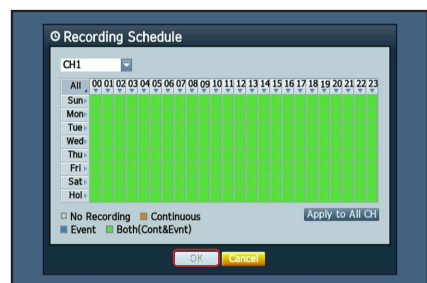
## RECORDING AND PLAYBACK

1. Press the [MENU] button on the remote control.  
Use the left/right button (◀▶) to select <Record>.  
Use the up/down buttons (▲▼) to move to <Recording Schedule>, and press [ENTER] button.



2. Set each of the Record Schedule options.  
To change the setting, set the channel then select the time and date you want to record and click <OK>.  
The default is as shown.

Color	Part Names	Functions
White	No Recording	No schedule / event recording
Orange	Continuous	Scheduled recording only
Blue	Event	Event recording only
Green	Both(Cont&Evt)	Both scheduled / event recordings



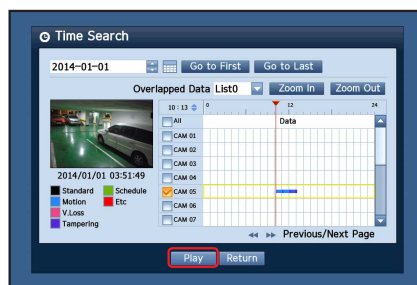
To change the record quality & resolution, select <REC Quality & Resolution>.

System	Record Size	Possible FPS
NTSC	CIF 352 × 240	OFF, 1~30
	2CIF 704 × 240	
	4CIF 704 × 480	
	WD1: 960 × 480	
	720p: 1280 × 720	
PAL	CIF 352 × 288	OFF, 1~25
	2CIF 704 × 288	
	4CIF 704 × 576	
	WD1: 960 × 576	
	720p: 1280 × 720	

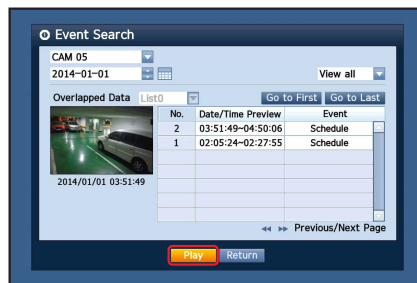


- In Live mode, click <Search> in the right-click menu. Select <Time Search> in the <Search> menu. Select a desired date in the calendar, and a desired timeline in the Time bar, and press the <Play> button if you want to watch the recorded video.

**!** The colored line indicates types of the recording data.  
If you want to play a time specific data, enter an exact time.



- If you have set the event recording, you can play a desired scene using the <Event Search> function. In Live mode, click <Search> in the right-click menu. Select <Event Search> in the <Search> Menu. Set a desired date in the calendar and the result will be listed on the table. Select one you wish to view and press the <Play> button.



- You can change the play speed or channel, or stop the playback using the onscreen button bar.

